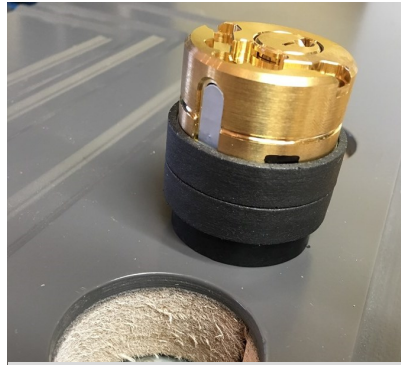
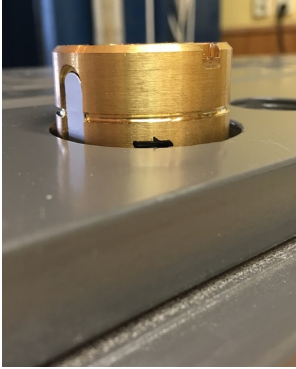


## CYLINDER

1. Apply sealing from outside.



2. Fit cylinder and do the mark from inside.



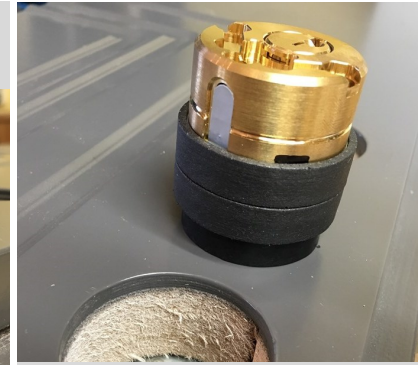
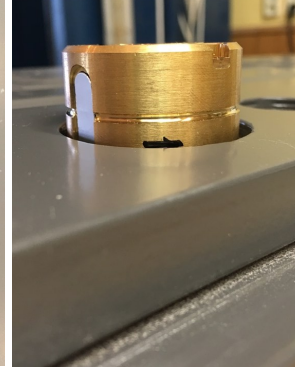
3. Apply two strips of sealing with spacer fitted.

## CYLINDER

1. Apply sealing from outside.



2. Fit cylinder and do the mark from inside.



3. Apply two strips of sealing with spacer fitted.

## DOOR HANDLE

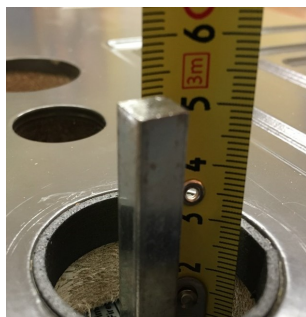
1. Apply sealing from inside.



2. Apply sealing from outside.



3. Fit the door handle from outside (and pin as well).



5. Apply sealing up to a measured distance.



4. Take measurement from inside.

6. Fit the door handle pin back from inside



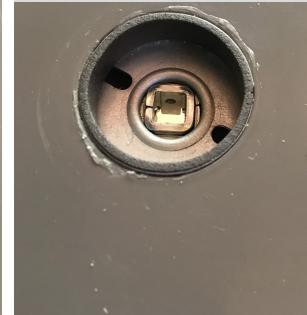
7. Apply the sealing from outside

## DOOR HANDLE

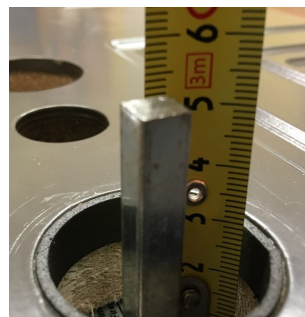
1. Apply sealing from inside.



2. Apply sealing from outside.



3. Fit the door handle from outside (and pin as well).



5. Apply sealing up to a measured distance.



4. Take measurement from inside.

6. Fit the door handle pin back from inside

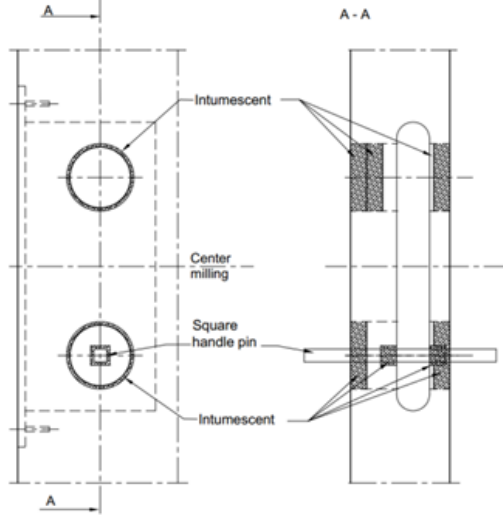


7. Apply the sealing from outside

# IMPORTANT!

## Instructions for installation of cylinder and door handle.

Intumescent seal Exterdens FA should be placed around the holes for cylinder, door handle and around door handle pin. Intumescent seal is enclosed with the fire door set.



# IMPORTANT!

## Instructions for installation of cylinder and door handle.

Intumescent seal Exterdens FA should be placed around the holes for cylinder, door handle and around door handle pin. Intumescent seal is enclosed with the fire door set.

